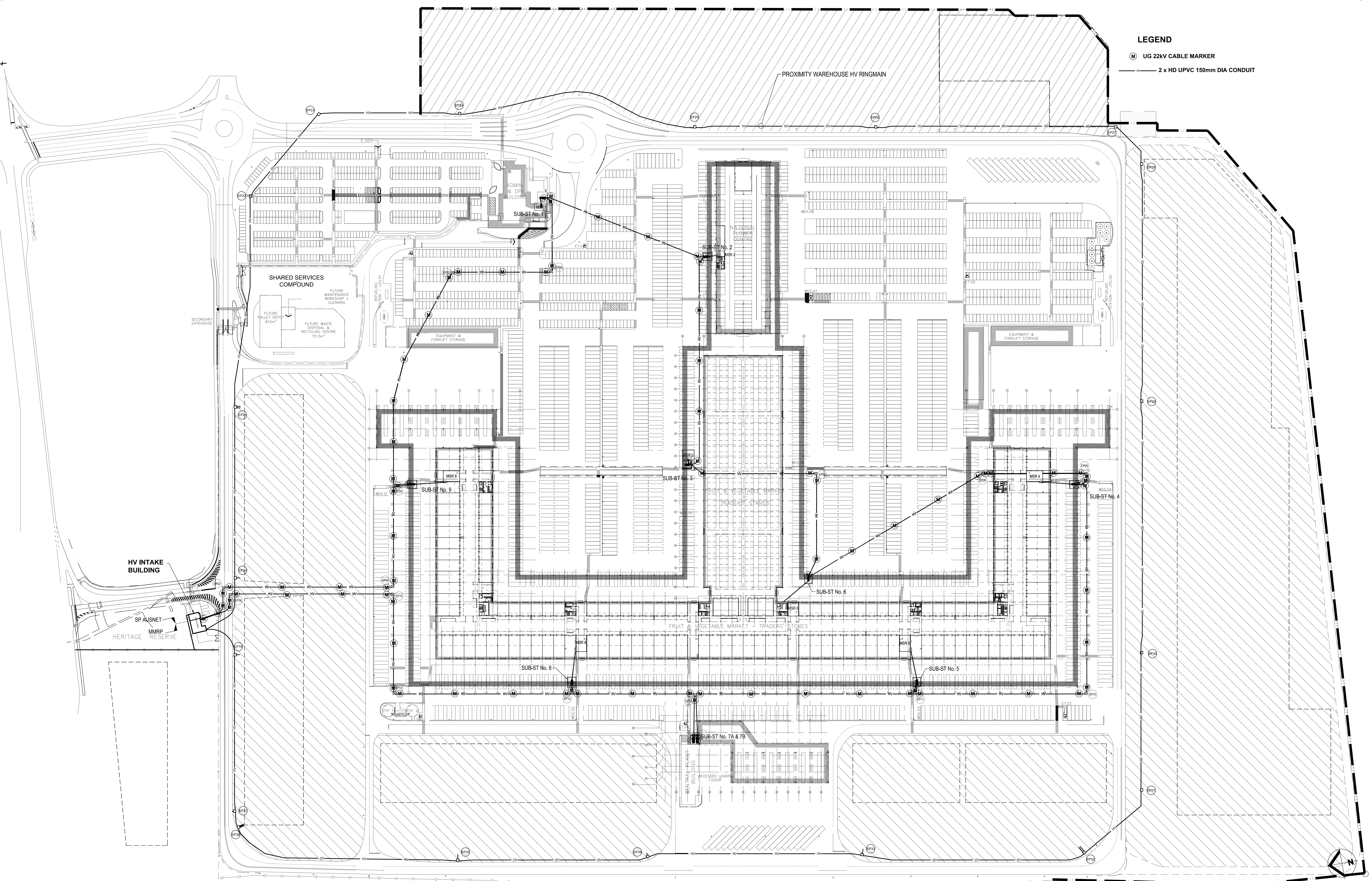


LEGEND

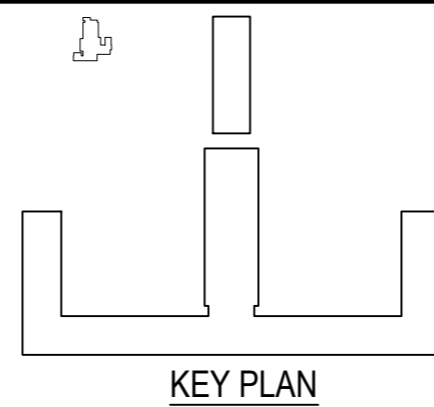
Ⓜ UG 22kV CABLE MARKER

— 2 x HD UPVC 150mm DIA CONDUIT



No.	DATE	REVISION	BY	CHECKED	APPROVED
1	12-01-10	ISSUED FOR PRELIMINARY REVIEW	KL	RP	
2	12-01-10	ISSUED FOR CONSTRUCTION	KL	RP	
3	12-01-10	AS SHOWN	KL	RP	
4	12-01-10	AS SHOWN	KL	RP	
5	12-01-10	AS SHOWN	KL	RP	
6	12-01-10	AS SHOWN	KL	RP	
7	12-01-10	AS SHOWN	KL	RP	
8	12-01-10	AS SHOWN	KL	RP	
9	12-01-10	AS SHOWN	KL	RP	
10	12-01-10	AS SHOWN	KL	RP	
11	12-01-10	AS SHOWN	KL	RP	
12	12-01-10	AS SHOWN	KL	RP	
13	12-01-10	AS SHOWN	KL	RP	
14	12-01-10	AS SHOWN	KL	RP	
15	12-01-10	AS SHOWN	KL	RP	
16	12-01-10	AS SHOWN	KL	RP	
17	12-01-10	AS SHOWN	KL	RP	
18	12-01-10	AS SHOWN	KL	RP	
19	12-01-10	AS SHOWN	KL	RP	
20	12-01-10	AS SHOWN	KL	RP	

MODEL BASED ON ARCHITECTURAL
INFORMATION RECEIVED ON:
25-01-2011
MODEL BASED ON CIVIL
INFORMATION RECEIVED ON:
21-12-2010



NILSEN
Electrical / Communications Engineers and Contractors
43 Sheehan Road West Heidelberg VIC 3081
Ph (03) 9450 1300 Fx (03) 9457 6921
ABN 57 004 139 904 REC.6

Lend Lease

Umow Lai Pty Ltd
ABN 29 143 564 738
10 Yarra St
South Yarra
Victoria 3141 Australia
T +61 3 9249 0288
umolai@umowlai.com.au
www.umowlai.com.au

Umow Lai

**MELBOURNE MARKET
RELOCATION PROJECT**

**ELECTRICAL SERVICES
SITE PLAN - 22kV HV UNDERGROUND
CONDUIT & PITS LOCATIONS & CABLE
MARKER POSITIONS**

DRAWN	SSH	DATE	JAN 2011
DESIGN	MHC	SCALE	1:1000
CHECKED	ZLP	FILE	SEL-00-10080
APPROVED	AJO	PLOT RATIO	1:60
SEL-00-10080			3